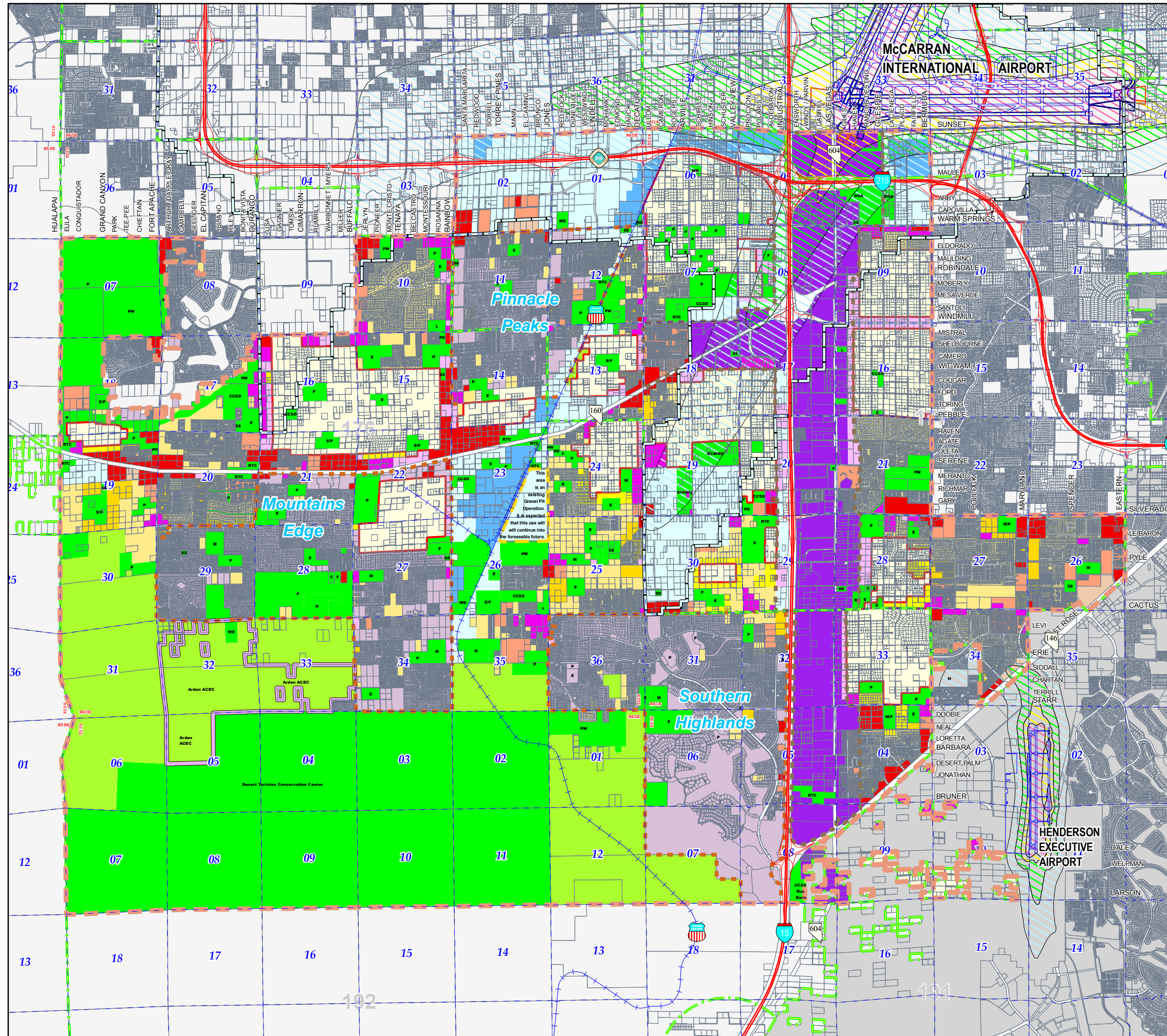


Comprehensive Planning

Map 7

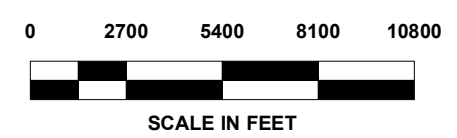
Planned Land Use

Adopted on: September 2, 2009



- | | | | |
|--|--------------------------------------------------|--|-------------------------------------------------------|
| | Open Lands | | Residential Urban Center
From 18 to 32 du/ac |
| | Agricultural | | Residential High Rise Center
Greater than 32 du/ac |
| | Residential Rural
Up to 0.5 du/ac | | Office Professional |
| | Residential Agricultural
Up to 1 du/ac | | Commercial Neighborhood |
| | Rural Neighborhood
Up to 2 du/ac | | Commercial General |
| | Residential Low
Up to 3.5 du/ac | | Commercial Tourist |
| | Residential Suburban
Up to 8 du/ac | | Business and Design
Research Park |
| | Residential Medium
From 3 to 14 du/ac | | Industrial |
| | Residential High
From 8 to 18 du/ac | | Heavy Industrial |
| | Rural Neighborhood Preservation
Up to 2 du/ac | | Public Facilities |
| | Cooperative Management Area | | Major Development Projects |
| | Community Districts | | Planning Area Boundary |
| | MDP Boundary | | Incorporated Cities
Tribal Lands |
| | Enterprise Gateway | | Military Facilities |
| | Arden ACEC Boundary | | Noise Environ AE-60 |
| | Airport Arrival RPZ | | Noise Environ AE-65 |
| | Airport Arrival and Departure RPZ | | Noise Environ AE-70 |
| | Airport Departure RPZ | | Noise Environ AE-75 |
| | | | McCarran International Airport |

- | | |
|----------------------------------------------------|-----------------------------------------------------------|
| S = School | P = Park |
| H = High | F = Fire Station |
| M = Middle | PD = Police Station |
| E = Elementary | PW = Public Works |
| L = Library | SS = Electrical Sub-Station |
| CCSD = School District
Property | WD = Water District |
| RTC = Regional Transportation
Commission | CCWRD = Clark County Water
Reclamation District |



Map Created On: September 2, 2009

This information is for display purposes only.
No liability is assumed as to the accuracy of the data delineated herein.
Categories denoted in the legend may not apply to a particular Planning Area.

